

Macintosh OS 10.4 and 10.5: Connecting to the Secured Wireless Networks

eSupport immediate help online: <http://www.support.cumc.columbia.edu>
 5-Help (212-305-4357) • 5help@columbia.edu • <http://www.cumc.columbia.edu/it>

Athens and **Rome** are the secured wireless networks on the CUMC campus. Both require that your computer be specially configured, and that you log on to the network with your Columbia UNI account.

Please see our **Wireless at CUMC** handout for general details and a list of all wireless locations, or visit: http://www.cumc.columbia.edu/it/getting_started/wireless.html

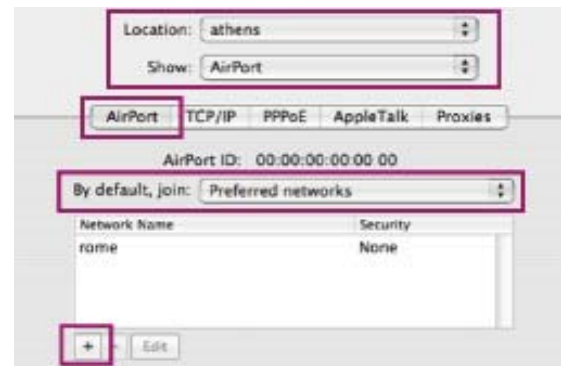
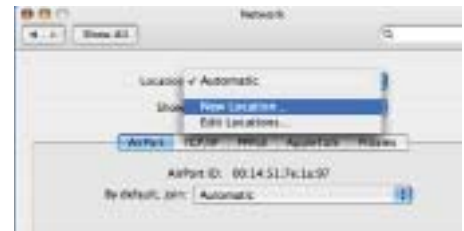
Instructions for connecting to both Athens and Rome are on this document (see below for Athens and the other side for Rome). You will only need to configure your computer once for each network.

Configuring Athens on Your Macintosh Computer

- Configuring for Athens on a Macintosh does not require that you install any additional software.
- Due to required encryption, Mac OS versions older than 10.4 (Tiger) will not be able to connect to Athens.

Macintosh OS 10.4 Tiger - see below for OS 10.5 Leopard

1. Select the **Network** icon from your Mac's **System Preferences (Apple icon - System Preferences)**.
2. Select **AirPort** from the **Show** drop down menu, then select **New Location** from the **Location** drop down menu.
3. Type **athens** as the new location name.
4. Make sure that **AirPort** is still listed in the **Show** drop down menu, and select **Preferred Networks** in the **By default, join:** menu.
5. Select the **+** button at the bottom left to add Athens to the Preferred Networks list.
6. In the next window that appears, select or type in **athens** for the **Network Name** field.
7. Select **WPA Enterprise** for **Wireless Security**, and **TTLS - PAP** for **802.1x Configuration**. Click **OK**.
8. Select **Apply Now** in the lower right hand corner of the Network Window to save the settings for Athens.

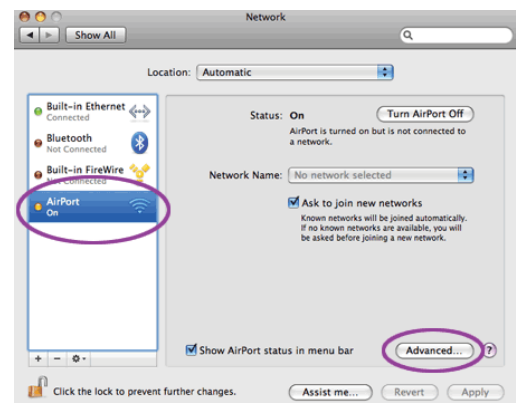
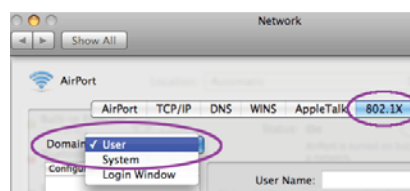


See the other side for instructions on logging in to Athens.

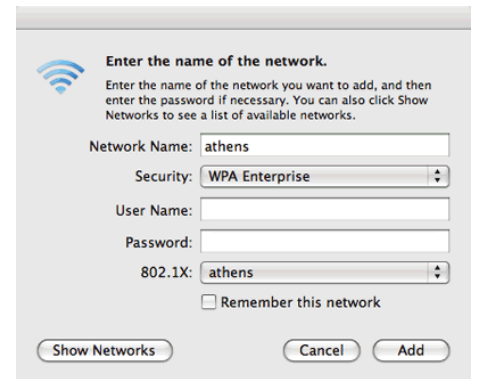
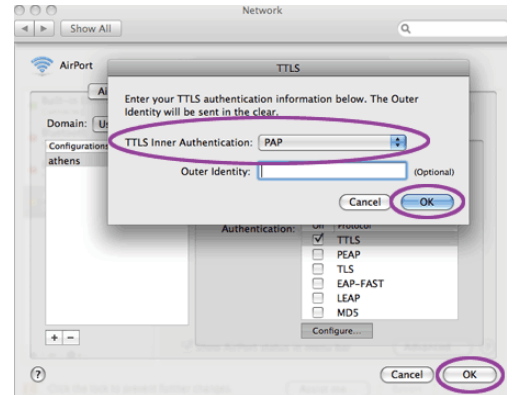
Macintosh OS 10.5 Leopard - for a tutorial with more detailed pictures please visit http://www.cumc.columbia.edu/it/getting_started/athens_leopard.html

1. Select the **Network** icon from your Mac's **System Preferences**.
2. Select **AirPort** from the list of networks on the left, then the **Advanced** button on the lower right.
3. Select the **802.1X** tab, then **User** from the **Domain** menu.

NOTE: if your OS is **10.5.4**, you may not see a **Domain** menu. Instead, select the **+** sign at the bottom of the **Login Window Profiles** column, and select **Add User Profile**.



- Click on the **+** sign in the lower left to add a Configuration. Remove “Untitled” and type in **athens** as its name.
- Leave the **User Name** and **Password** fields blank. Make sure that only **TTLS** is selected for **Authentication**.
- With **TTLS** highlighted, select the **Configure** button at the bottom of the list of **Authentication** options.
- In the pop up that appears, select **PAP** for **TTLS Inner Authentication**, then **OK** to return to the 802.1X window.
- Click on **OK** again to return to the main Network window and save your settings.
- Make sure **Airport** is highlighted in the list on the left, and select the **Advanced** button in the lower right again.
- Select the **Airport** button from the top menu and click on the **+** sign in the lower left to create a new Preferred Network called athens.
- In the window that appears, type in **athens** for the **Network Name** and select **WPA Enterprise** for **Security**.
- For **User Name** and **Password**:
 - To be prompted to log in each time you want to connect to Athens (recommended - more secure), leave these fields blank.
 - If you would like to always connect to Athens automatically, enter your UNI for the **User Name** and your UNI's password for the **Password**.
- Select **athens** from the **802.1X** drop down menu.
- Click on the **Add** button, then verify that your connection is listed under the **Preferred Networks** listings.
- Click the **OK** button in the lower right, the **Apply** at the next window to save your settings and exit the System Preferences panel. You may have to provide the administrative password for your computer.



Logging in to Athens: When your computer detects the Athens network, it should prompt you for a User name and Password (unless you opted to save them in Step 12 above). Use your Columbia UNI and password to log in. You may see a **Verify Certificate** window after logging in, if so please select the **Continue** button. To change between wireless networks, select the Mac's wireless icon in the upper right hand corner of the screen and select the network you'd like to use.

Configuring Rome on Your Macintosh Computer

- Configuring your Mac to connect to Rome requires that you install the free Cisco VPN software program.
- VPN is a program that encrypts all data sent across the Rome wireless network on the CUMC campus; it is not required for use on the Morningside campus.

To configure and use Rome:

- Go to http://www.cumc.columbia.edu/it/getting_started/vpn_macosx.html to download the required VPN software program and follow the step by step configuration instructions.
 - Connect to the unsecured **guest-net** network to download VPN, or you can also stop by the Service Desk on the second floor of the Library to receive a copy of the program.
- After installing VPN, **you must restart your computer**. *VPN will not work properly until you reboot your Mac.*
- When your computer's wireless card detects the **Rome** network, you can open the Cisco VPN application, select the **West Campus Rome Wireless Network** to connect, and log on with your UNI and password.
- Be sure to disconnect (select the **Disconnect** icon in the VPN window) when you are done using Rome.

For more detailed information please see our **How to Use VPN** handout.