

Set Your Computer to DHCP

eSupport immediate help online: <http://support.cumc.columbia.edu>
 5-Help (212-305-4357) • 5help@columbia.edu • <http://www.cumc.columbia.edu/it>

Computers connecting to the CUMC wired campus network must have their network settings configured for DHCP, so they automatically receive the appropriate IP (network) address when connected. This may also be referred to as Roaming, regardless of whether your computer is a laptop or not.

Do not configure a Static or manual IP address on your computer unless you have been specifically instructed to do so by your IT support staff with approval from CORE Resources, the group that manages the campus network. Configuring a manual IP address without approval may cause conflicts with other computers on the network and can result in immediate loss of connectivity.

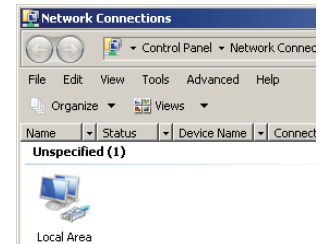
To configure, see the set of instructions for your computer's operating system on either side of this handout.

Windows Vista

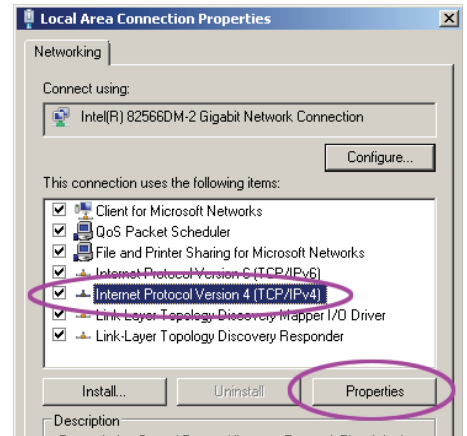
1. Select the **Start** button in the lower left corner of your computer screen, then **Control Panel**, then **Classic View** from the upper left.
2. Double click on the **Network and Sharing Center** icon.
3. Select **Manage network connections** from the Tasks menu on the left.
4. Look for the **Local Area Connection** that is for your wired network card. **Right click once on the Local Area Connection**, then left click once on **Properties**.

NOTE: your wired connection will not reference wireless, VPN, or 1394. Please contact us if you are not sure which is the correct icon for the wired card on your computer.

5. If prompted for permission, click **Continue**.
6. The **Local Area Connection Properties** box will appear; make sure the **Networking** tab is selected.
7. In the middle of the window, find or scroll down to **Internet Protocol Version 4 (TCP/IPv4)**. Click on **Internet Protocol Version 4** once to highlight, then select the **Properties** button at the right.

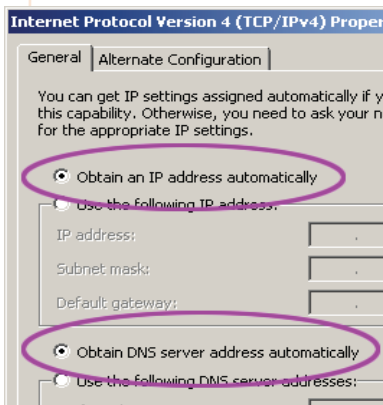


Step 4



Step 7

8. The **Internet Protocol Version 4 (TCP/IPv4) Properties** window will appear. Make sure that the **General** tab is selected, and check the radio dial for both of the following options:



Step 8

- **Obtain an IP address automatically**
- **Obtain DNS server address automatically**

NOTE: Changing to automatic IP and DNS addressing will immediately remove any IP address and server information that may be stored here, if you will need these settings on another network you should make note of them before removing.

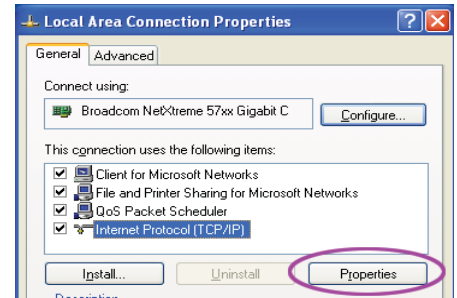
9. Select the **OK** button to save and exit this window, then select **OK** again to save and close the Local Area Connection Properties box.

You may have to restart your computer after configuring your computer in order to connect to the network. Be sure that your computer and that it is properly plugged in to a data port using a Cat 5 (network) cable.

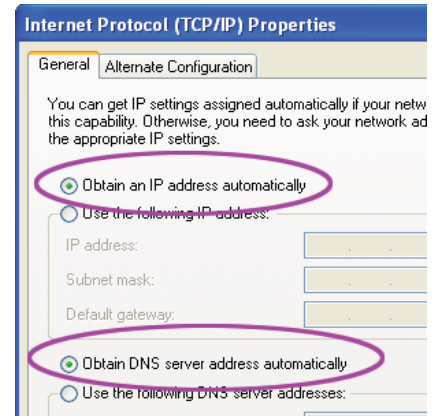
Please see the other side of this handout for instructions on configuring DHCP for Windows XP and Macintosh OS X systems.

Windows XP

1. Select the **Start** button in the lower left corner of your computer screen, then **Control Panel**, then **Network and Internet Connections**.
 2. Select **Network Connections**.
 3. Right click once on your **Local Area Connection**, then left click once on **Properties**.
 4. The **Local Area Connection Properties** box will appear. In the middle of the box, scroll down to **Internet Protocol (TCP/IP)**. Click on **Internet Protocol** once to highlight, then select the **Properties** button.
 5. Select the radio dial for both of the following options:
 - **Obtain an IP address automatically**
 - **Obtain DNS server address automatically**
- NOTE: Changing to automatic IP and DNS addressing will immediately remove any information that may be stored here, if you will need these settings on another network you should make note of them before removing.
6. Select the **OK** button to save and exit this window, then select **OK** again to save and close the **Local Area Connection Properties** box.
 7. You may have to restart your computer after configuring your computer in order to connect to the network. Be sure that your computer and that it is properly plugged in to a data port using a Cat 5 (network) cable.



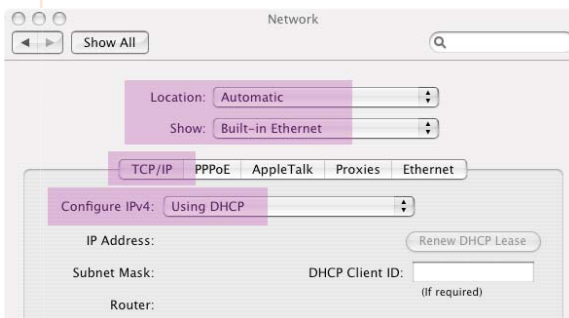
Step 4



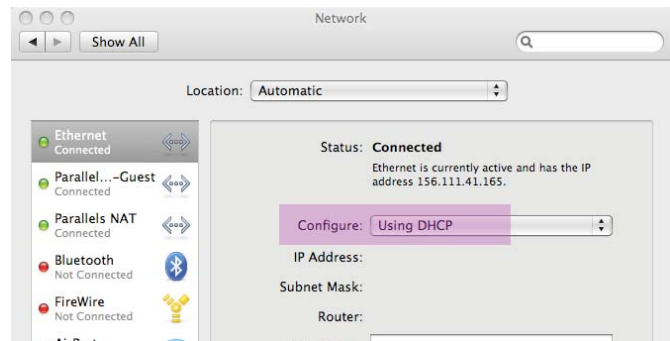
Step 5

Macintosh OS 10.5 (Leopard) and 10.4 (Tiger)

1. Open your **System Preferences** (Apple icon - System Preferences), and select the **Network** icon.
2. If you need to save already configured manual settings for another wired network your Mac connects to, select **New or Edit Location** from the **Location** drop down menu, then the **+** icon if necessary and type **CUMC** to indicate the campus wired network. Otherwise leave the Location as **Automatic**.
3. **Tiger**: select **Built-in Ethernet** in the **Show** drop down menu. **Leopard**: Make sure Ethernet is selected on the left.
4. **Tiger**: Select the **TCP/IP** button in from the center menu. **Both**: Select **Using DHCP** from the **Configure** drop down menu.
5. Select **Apply** in the lower right corner of the Network window to save your changes.
6. You may have to restart your computer after configuring your computer in order to connect to the network. Be sure that your computer and that it is properly plugged in to a data port using a Cat 5 (network) cable.



Tiger OS 10.4



Leopard OS 10.5