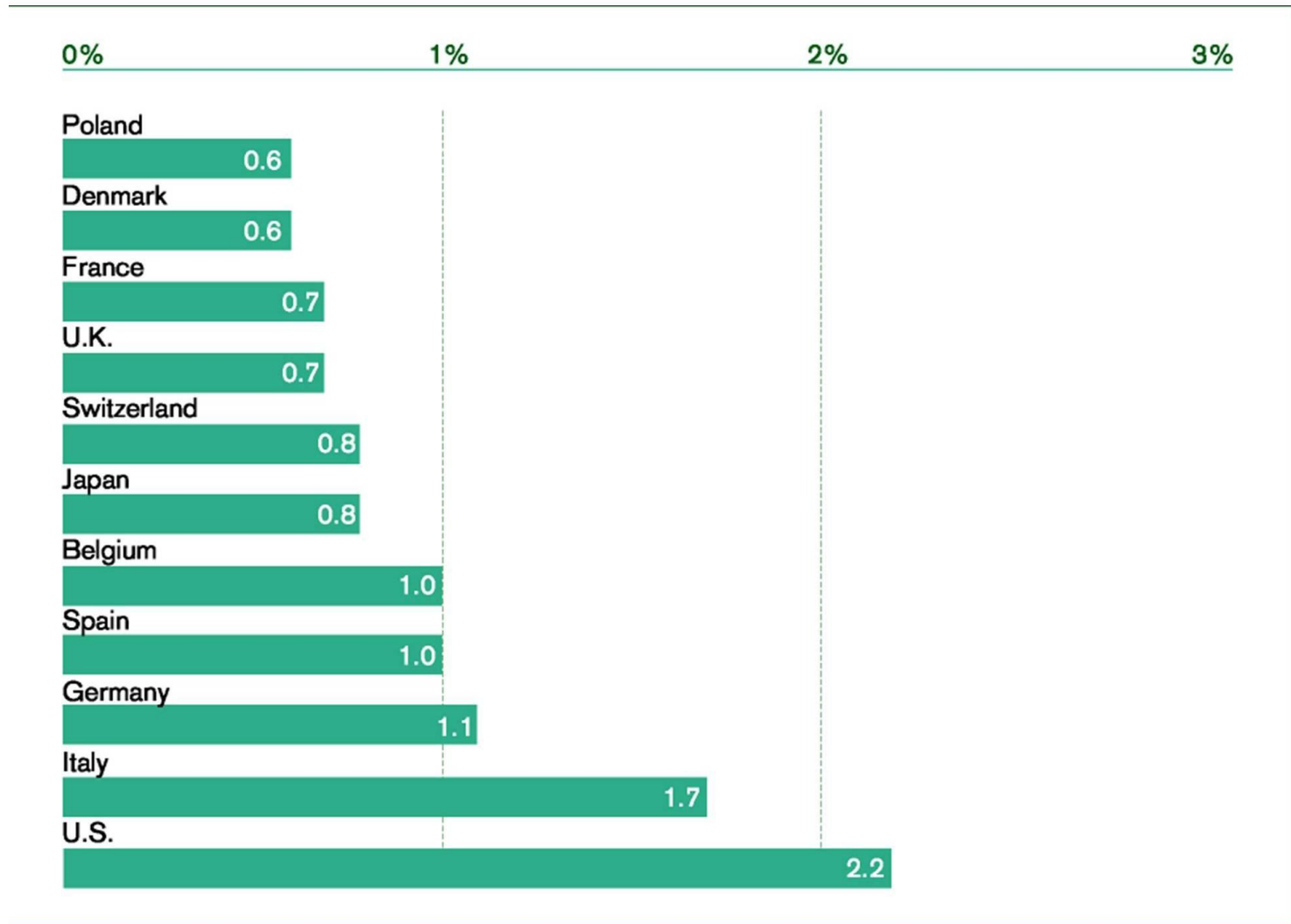
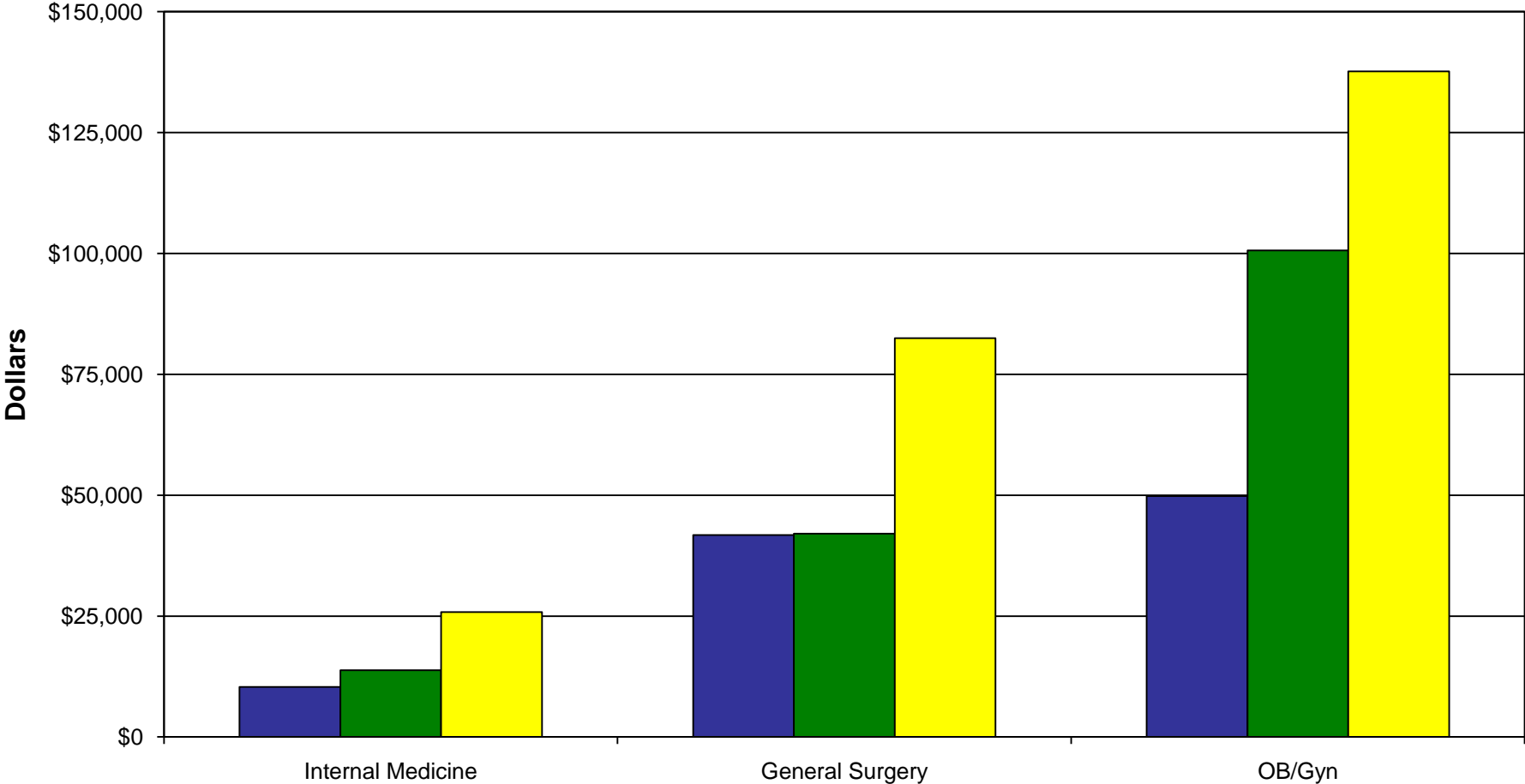


## Tort Costs as a Percentage of GDP, 11 Industrialized Countries



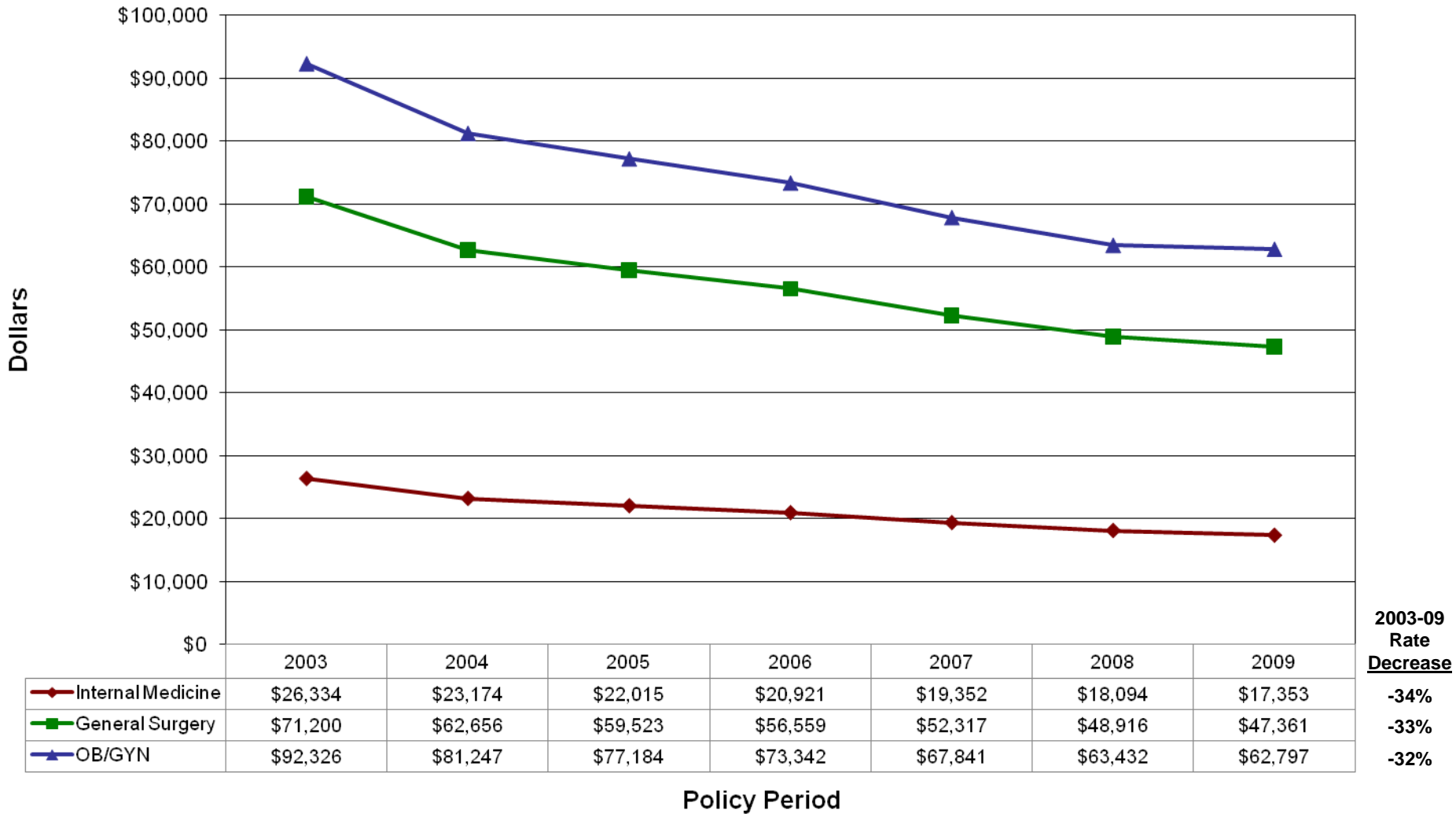
Source: Tillinghast-Towers Perrin, *U.S. Tort Costs and Cross-Border Perspectives: 2005 Update* (New York: Tillinghast-Towers Perrin, 2006).

# Medical Malpractice 2009 Rates by State



■ California – The Doctors Company – Los Angeles  
■ Massachusetts – ProMutual  
■ New York – Medical Liability Mutual Insurance Co. (MLMIC – New York County)

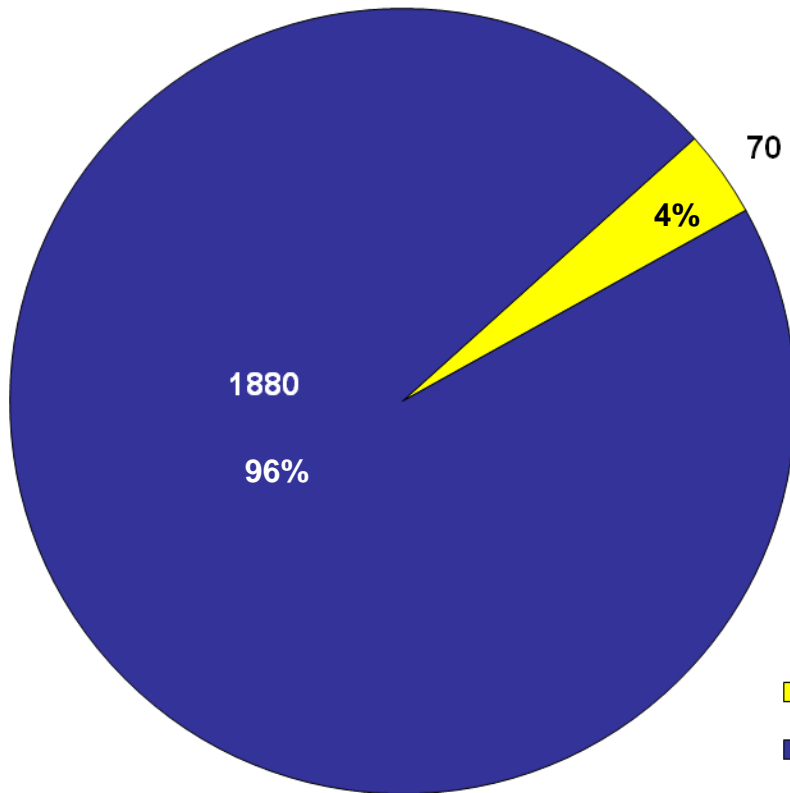
# Medical Malpractice Rates Texas\*



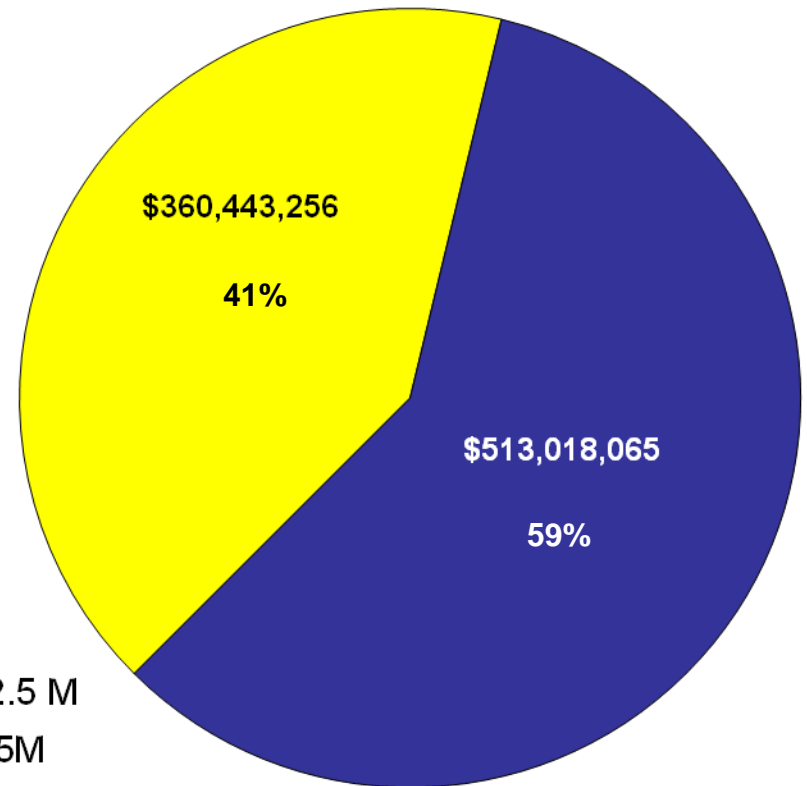
\* Texas Medical Liability Trust (TMLT) Rates

# Large Claim Impact on MCIC NY Institutions 2000-2007

**Case Count**



**Claim \$'s**



■ Cases >= \$2.5 M  
■ Cases < \$2.5M

What New York State Will  
Save Each Year With  
Medical Malpractice Reform

**\$305 MILLION**