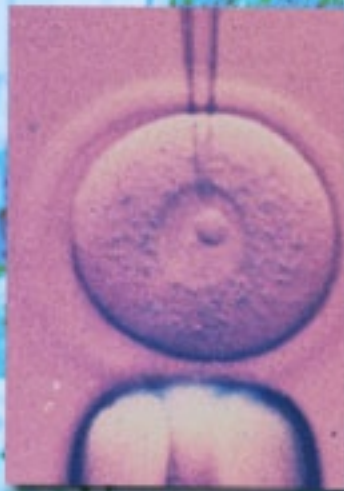


BioCEP-2009

(Bioethical Cross-cultural Educational Program)



Bioethics in *Thailand* (July 30-Aug. 15):

A two week intensive summer internship program designed to promote educational and cultural exchange in Bioethics and Public Health (medical tourism, emerging infections, stem cell research, reproductive medicine, HIV, abortion, etc) with students from Mahidol University in Bangkok, Thailand.

Eligibility:

- * Undergraduate students.
- * Graduate students in schools of medicine, dentistry, public health, biological sciences, and nursing.

Program outline:

- * Lectures, student discussions, professional visits to clinics and research labs, hospices, and cultural tours in Thailand.
- * Students will partner with corresponding students from Mahidol University.
- * An optional two-week clinical internship is available.

Program fee: \$1500 (excluding travel to Thailand)

- * Applications due by 12/31/08
- * Application fee: \$35
- * Internship fee of an additional \$500.

Applications available on-line
at www.columbia.edu/~JDL5
(Limited financial aid is available)



Executive Summary
BioCEP 2009
(Bioethical Cross-cultural Educational Program)

Under the leadership of President Lee Bollinger, Columbia University has developed its global identity, presence, and perspective. Building on Columbia University's long-standing partnerships with institutions and people in Asia, the Center for Bioethics, has developed a cross-cultural educational program in bioethics, called BioCEP (Bioethical Cross-cultural Educational Program) with Mahidol University in Bangkok, Thailand.

BIOCEP is a prototype for interscholastic cooperation designed to align students with modern international global issues in the area of bioethics. In this educational enrichment summer workshop, Columbia University students and students from other American Universities spend two weeks in Thailand with Mahidol University students engaged in lectures, discussions, and on-site professional visits exploring the challenges of bioethics and medical ethics. This comprehensive workshop is based on the extensive experience of Columbia University's faculty in the areas of bioethics and public health education. This program focuses on how different cultures, religions, and governments respond to and resolve bioethical challenges including: emerging infections (SARS, avian flu, malaria), the integration of Western and Eastern medicines, medical tourism, stem cell research, abortion, public health, HIV, genetic testing, and reproductive medicine. Furthermore, selected American students will also have the option to spend two additional weeks in Bangkok as interns at an internationally renowned medical tourism hospital. BioCEP's interdisciplinary program aims to enrich students' cross-cultural awareness and analytical skills concerning the ways different religions and cultures work to resolve complex issues in bioethics and Public Health.

The first successful BioCEP program in 2007 included 17 Columbia University students and 10 students from Mahidol University. In 2008, 14 Columbia University students and 6 students from other East Coast universities participated in the Program. The non-Columbia University students were from Georgetown University, the University of Pennsylvania, Yeshiva College, and Lander College for Women. The 2009 BioCEP program will recruit 12 Columbia University Students and 8 university students from prestigious East Coast institutions of higher learning. BioCEP represent an ideal opportunity for students to experience bioethics and public health issues in other countries and to view, on site, the impact of diverse cultures and religious attitudes on global public health education and delivery. The outcome of this innovative program goes beyond classical classroom-based education. It fosters experience in real-life situations, creative thinking and conflict resolution, all of which are essential components to cultivate the next generation of leaders emerging from American Universities. In addition to participating in an educational program, the students serve as global goodwill ambassadors for American Universities. BioCEP underscores Columbia University's leadership role as a global university and commitment to interscholastic educational exchange and collaboration with emerging Asian countries.

Summary and outcomes of the 2008 BioCEP Program:

- Twenty American University Students participated in the 2008 Program, including six students from other East Coast Universities to join Columbia University students.
- Three Columbia University Faculty (Dr. John D. Loike, Director of Special Projects, Center for Bioethics, Columbia University, Dr. Ruth L. Fischbach, Director, Center for Bioethics, Columbia University, Dr. Gerald Fischbach, John E. Borne Professor of Medical and Surgical Research and former Dean of the medical school) participated in the 2008 Program.
- Six students remained in Bangkok to do two week internships at Yanhee Hospital, a leading health care facility in medical tourism.
- The 2008 BioCEP program raised the academic bar with respect to lectures, dialogue, discussions.
- Initiated an exchange program where Mahidol University will sponsor Thai students to do internships in a biomedical research laboratory at Columbia University or to apply for Master's or Ph.D. programs at Columbia University.
- The Program hosted Ambassador Chirachai Punkrasin, Permanent Mission of Thailand to the United Nations, at Columbia University College of Physicians and Surgeons.
- American students could obtain 2 college credits from Mahidol University for participating in BioCEP.

BioCEP

CENTER FOR BIOETHICS
COLUMBIA UNIVERSITY COLLEGE OF PHYSICIANS AND SURGEONS

Executive Committee:

Ruth L. Fischbach, Director of the Center for Bioethics
John D. Loike, Director of Special Projects, Center for Bioethics

Admissions Committee:

Dr. Donna Shelley – Clinical Associate Professor of Medicine, New York University Medical Center,
Dr. Kathleen McDermott - Vice President - Office of Global Programs, Columbia University
Ms. Magen Rigney - Director of Pre-professional Advising -Columbia College / SEAS- Columbia University

Student requirements

Each participant must write an original five page paper in collaboration with a BioCEP Mahidol University student . The paper should focus on comparing one bioethical challenge and compare and contrast the American versus the Thai perspective. The

format of the paper will include a title, abstract, introduction, explanation of the biotechnology, identification of the bioethical issues emerging from the biotechnology and discussion in which the students proposes several options to resolve the bioethical challenges based on US vs. Thai culture.



Introduction:

Issues related to bioethics are universal and impact all societies and cultures. However, there is a need to explore novel ways of teaching bioethics across cultural, religious, and linguistic boundaries. Equally important, since the major cultures of the world have strong and sometimes common traditions in these morality-based areas, there is ample room for cross-cultural exchange. There is also a real need to develop the skills, knowledge, and strategic thinking in students across the globe in order to address the common ethical dilemmas that emerge from new biotechnologies associated with clinical practice and biomedical research. Ethics education is important in medicine and science because it prepares students to think critically and to respond appropriately to difficult bioethical challenges. Student preparation involves scholarship, experiencing real situations, and understanding how diverse cultures across the globe manage and resolve challenging bioethical and medical ethical dilemmas. Exposing students to the medical humanities serves as a platform for developing a humanistic sensitivity and stimulates their curiosity to help them develop analytical skills in the social sciences. It also fosters an open attitude toward the other social and cultural dimensions of medicine and science and bolsters students' confidence in their own inner values by presenting them with a cross-cultural vision.

Academic Globalization

Processes of academic globalization are gathering momentum and pervasiveness. American university tradition poses important lessons for universities around the world in many areas of academic study including science and medicine. Columbia University's President, Dr. Lee Bollinger, is committed to engaging the resources of this institution to bolstering Columbia's role as a center of global research and education.

Biotechnology is a global venture in which there are diverse ethical standards across different societies. There is almost international agreement to ban human reproductive cloning but there is little agreement about engaging in human embryonic stem cell research. Additionally, ethical issues related to public health challenges such as malaria, SARS, HIV, TB, and the threat of emerging pandemics are important areas to explore. Other cross-cultural bioethical challenges include: genetic engineering, pre-implantation genetic diagnosis, sex selection, abortion, designer babies, euthanasia, and how to prioritize scientific research funding. Students from Columbia University and other American universities can learn a great deal from students and faculty from other countries within an environment where there is shared learning. The tremendous value of an international presence and cross-cultural exchange is rarely used to its fullest potential in bioethics. The next generation of American students should be exposed to this rich resource and BioCEP offers an on-site opportunity to exchange knowledge and experience between leading American universities and top South East Asian universities. Sharing knowledge builds cultural bridges and promotes communication between diverse societies.

Student Cross-Cultural Educational Program

A two-week intensive program/workshop has been developed to promote international and cultural education in the areas of bioethics and medical ethics for undergraduate students, graduate students in public health, nursing students, and medical students at Columbia University who are planning careers in health care, science and medicine. The initial objective is to promote cross-cultural education with students and faculty from Southeast Asian universities using Thailand as the culture-model. This cross cultural program is designed to enrich student education in bioethics and will take place from Friday, July 31st to Friday, August 14th, 2009.

Why Thailand and Mahidol University?

Thailand is an emerging country that is engaged in resolving a wide variety of bioethical issues. Thailand has a predominantly Buddhist-based culture that contrasts with the major religions that most students are exposed to in the United States. Both the United States and Thai governments recognize the value of biomedical research. Like Singapore, China, Japan, and Malaysia, Thailand has committed hundreds of millions of dollars over the next ten years to enhance biomedical research. These research funds will be provided to support stem cell research and combating major public health concerns such as malaria and HIV. Thailand and the United States share common bioethical and medical ethics issues such as:

- How to allocate limited funds to support biomedical research and clinical programs,
- How to resolve bioethical issues related to embryonic stem cell research,
- How to balance religious and cultural values with biomedical research and clinical application of new biotechnologies,
- How to apply new biotechnologies in reproductive medicine within an ethical platform.
- How to resolve public health issues such as sexually transmitted diseases, drug abuse, smoking, and unwanted teenage and adult pregnancies.

There are also many medical ethics issues that Thailand faces that are unique to that region. These include:

- Medical tourism (Cosmetic surgery, Sex change operations, Dentistry, and Organ transplantation),
- Developing detection, educational, and treatment programs for emerging infectious diseases such as AIDS, malaria, avian flu, and SARS,
- The integration of Western medicine with traditional Eastern alternative medical procedures and medications,
- Developing innovative educational and treatment programs for genetic-based diseases such as Thalassemia,
- The role of family, physicians, and monks in genetic counseling.

Mahidol University: Mahidol University is comprised of 6 colleges, 8 research centers and 2 medical schools with 3 training hospitals. Their hospitals staff 700 physicians, have 4,000 beds, and service 4 million outpatients and 140,000 in-patients per year. Their undergraduate division has over 13,000 students in the BA program, 1,100 students in their Doctoral programs, 500 medical students and 5,500 students enrolled in Master's programs. Mahidol also has the largest international exchange program for English speaking students in Thailand.

BioCEP: July 31th to August 14th, 2009

Columbia University students: (12 students in total)

- Undergraduates who have completed one year at either Columbia Undergraduate divisions of CC, GS, SEAS and Barnard College.
- Medical students at Columbia University College of Physicians and Surgeons who have completed their first year.
- Graduate students in the Mailman School of Public Health or other graduate programs who have completed their first year of study.

Other U.S. University students: (8 students in total)

- Undergraduates who have completed one undergraduate year.
- Medical students who have completed their first year.
- Graduate students in the School of Public Health or other graduate programs who have completed their first year of study.

Mahidol University International College students: (16 students in Total)

- Thai undergraduate students from Mahidol who are also pursuing careers in medicine or science.
- Thai graduate university students who have finished their first year in medical school or other science based or health care-based graduate programs.

Sample Curriculum: [see Tentative Schedule-page 13]

All students participating in this program will be mentored by Mahidol and Columbia University professors. The participants of the program will engage in several on-site workshops designed to foster cultural exchange in the areas of bioethics and medical ethics.

Academic lectures, professional site visits and cultural tours:

- Before traveling to Thailand, American university students will have three orientation sessions at the main campus of Columbia College which will introduce them to the culture, religion, and travel in Thailand. Orientation will also include health, food, and lodging information for this program. These sessions will be scheduled in May 2009. One session will be devoted to providing background materials for the topics covered during the program in Bangkok,

- BioCEP participants will be provided with reference materials to enhance their understanding of bioethics and cross-cultural bioethics,
- The daily Program in Thailand, will consist of approximately three hours of lectures followed by 90 minutes of discussion.
- Professors from Mahidol Univeristy will give lectures on Thai history, religion, and culture.
- Mahidol and Columbia professors will lecture on current topics in bioethics and medical ethics.
- Guest speakers from the medical, academic, and public communities; and the Ministry of Health of Thailand will also present lectures on their approach to medical ethics and bioethics.
- Professional activities such as visiting biomedical research laboratories, the Ministry of Health, the National Biotechnology Center, public and private hospitals and medical clinics (see below).
- Cultural events that include touring Bangkok.
- Weekend activities that focus on University-based social or cultural programs to expose American students to the culture of Thailand.
- Selected students will also have the opportunity in Thailand, to extend their stay for two weeks in a special clinical internship. During this time, students will intern at Yanhee Hospital to observe normal health care management in a private hospital. In addition, Yanhee is a world renowned medical tourism hospital specializing in beauty. Students will have the opportunity to observe the various procedures related to beauty enhancement from plastic surgery to sex change operations.
- All lectures will be in English.

General Topics to be Covered

- Human reproductive cloning,
- Human stem cells,
- Neuroethics,
- Genetic determinants for human disease,
- Bioethical issues regarding genetic sovereignty,
- Ecological Bioethics, including genetically modified plants and animals,
- Birth Control, abortion, contraception, sex selection, and family planning, IVF.
- Pre-Implantation Genetic Diagnosis.
- Emerging Infections and pandemics such as Malaria, Dengue Fever, SARS, and Avian Flu.
- Medical Tourism for sex-change operations, cosmetic surgery, organ transplantation and In Vitro Fertilization (IVF).
- Integration of “Western medicine” with alternative Eastern medicine.
- Religious views of intelligent design and evolution.

Professional Visits:

Students will visit several biomedical research laboratories, private and public hospitals, public health clinics and rural medical facilities. These visits provide students with an opportunity to speak with researchers and physicians, and observe scientific research, biomedical research and health care in Thailand. Students will acquire first hand knowledge essential in understanding Thailand's unique bioethical issues. For example, students will have the opportunity to visit clinics at the Mahidol Institute for Tropical Diseases that has established sophisticated programs in the areas of emerging infections and controlling drug resistant pathogens. Students will also visit research laboratories such as the Institute of Molecular Biology and Genetics, the Institute of Nutrition, "East Meets West Clinic" where students can volunteer to experience safe alternative medical experiences such as massage therapy or aromatherapy, Thalessemia clinics, and malaria clinics. Students will also visit Siriraj Hospital's IVF clinic.

Cultural Visits:

Group visits to culturally significant locations will be organized, including:

- Wat Phra Kaew, Grand Palace and the Temple of the Emerald Buddha,
- Vimanmek Teakwood Mansion
- Open-air orchid flower farm
- Thai Village and Culture Show-a demonstration of traditional folk dances, ceremonies, and martial arts unique to Thailand
- China Town and Khao San Road
- Ayutthaya - Former Thai capital, with Khmer style temples and ruins. There is a well-known hospice that services children with AIDS at this site
- Koh Samet, an island with one of the most pristine beaches in Thailand
- Snake farm and venom extraction
- Jatujak Market (silk, clothes, home decorations)

Housing:

Students will have arranged housing at Mahidol International College-arranged housing facilities. Most rooms are air-conditioned and double occupancy. Internet access is available at the housing facility. Mahidol Medical School and its affiliate hospitals are only 40 minutes by car from the International College. Mahidol University will provide transportation to all sponsored events, visits, and tours in air-conditioned buses.

Academic Requirements:

All undergraduate students must be registered at Columbia University or another United States University and should have taken at least one year of biology and chemistry. Graduate students and medical students must have completed their first or second year. Students will be chosen by a Columbia University-based committee based

on their academic record, a 500 word essay and an interview by members of the selection committee. A \$35 non-refundable application fee will be required for all applicants. The application form is found on pages 11-12. The application interview will take place in December, 2008 and January, 2009 with a final decision made by February 1st 2009.

Credits:

The program will be offered as an internship. At this point in time, undergraduate students will be eligible for undergraduate credits given by Mahidol University. Graduate students in the Mailman School of Public Health will have the opportunity to receive academic credit if they extend their program to one month by volunteering in a clinic or ministry of health. In addition, medical students in their fourth year will have the opportunity to extend their visit and volunteer in an appropriate clinic to receive rotation credits subject to pre-approval from Columbia University College of Physicians and Surgeons.

Supplementary Two-week Internship: Aug. 17-Aug 29.

Selected students will have the opportunity to remain in Bangkok for an additional two weeks where they will intern at Yanhee Hospital. Yanhee Hospital is a leading hospital in the area of medical tourism and offers individuals from around the world elective medical procedures. Interns will observe various types of surgical procedures such as Cesarean sections, tumor removal, cosmetic surgery and sex change operations. At the end of their internship, the students will be required to write a five page paper related to their experience. The cost for this additional internship is \$500 to cover housing costs and transportation to and from Yanhee Hospital.

Logistics of the program:

Transportation, housing, cultural tours, lectures, and professional visits to laboratories and clinics at Mahidol University are be arranged via Knowledge Exchange Institute [<http://www.keiabroad.org>] (Eduard Mandel, Director). Transportation from and to the airport will be provided. All American students will be housed at Chayapruk International house. This facility has internet access, a shared kitchen and is close to an outdoor swimming pool. In General two students will share one room. This facility is located off-campus with easy access to transportation to and from the center of Bangkok.

Program Fees and Other Costs:

As an internship, the program fee will be \$1,500 per student. A non-refundable application fee will be \$35. All applicants must pay and arrange their own transportation to and from Bangkok and arrive on Thursday, July 30th in the evening. Transportation will be provided on July 30th from the Airport to Mahidol University.

The program fee will cover housing in Thailand, medical insurance, airport welcome &

transfers, orientation & on-site support, professional visits, cultural visits, transportation for planned visits, and internet access at Mahidol University.

Participants should make their travel arrangements as early as possible, preferably in February. In 2008, travel to and from Bangkok's International Airport varied between \$1300 and \$1800. There were no direct flights in 2008. Some students were able to use frequent flyer points to obtain their tickets.

Participants should budget additional funds for meals (\$150, university food costs \$3 per lunch or supper) and personal expenses (\$100). International students enrolled in U.S. universities may be required to obtain a Visa (\$50) from the Thailand Embassy in New York or Washington. U.S. citizens do NOT need a visa.

Scholarships and Funding Opportunities:

Each year several students receive scholarships ranging from \$500 to the full cost of the program. We anticipate that some of these funds will be available for the 2009 program as well. There are several outside funding opportunities for students who require financial aid to help cover the costs of the program. Those sources of funding will be discussed with each applicant during the interview process.

Application and Selection Process:

Students will be chosen by a Columbia University-based committee based on their academic record, a two page essay, and an interview. The selection committee will be composed of Dr. John D. Loike, (Co-Director of Graduate Studies, Department of Physiology, Faculty Associate, Center for Bioethics, Columbia University College of Physicians and Surgeons), Dr. Ruth Fischbach (Director, Center for Bioethics, Columbia University College of Physicians and Surgeons), Dr. Donna Shelley (Assistant Professor of Clinical Medicine, Department of Sociomedical Sciences, Mailman School of Public Health), Dean Magen Rigney (Director of Preprofessional Advising, Columbia College / SEAS-Columbia University), and Dr. Kathleen McDermott (Vice President, Office of Global Programs).

All applicants must complete the application form found on pages 11-12. A \$35 non-fundable application fee will be required for all applicants. Checks should be made payable to Columbia University. For the summer 2008 program, the selection committee interviewed 100% of the applicants and accepted about 50%. Selected applicants will be interviewed in December, 2008 and January, 2009 with a final decision made by February 1st, 2009. Upon acceptance to the program, all participants must decide by February 15th, 2009 and pay a \$750 non-refundable deposit for the program fee. The remaining \$750 must be paid by June 1, 2009. Applicants are responsible for arranging their own flights to Bangkok and should expect to pay around \$1200 if booked in March. Arranging airfare after that date will generally cost more than \$1500.

APPLICATION FORM FOR BIOCEP 2009 [July 30- August 14th 2009]
(must be received by Dec. 1, 2008)

PERSONAL AND ACADEMIC INFORMATION

Surname/Family Name: _____ First Name: _____

Social Security Number: (U.S. Applicants Only) _____

Passport Number _____

Date of Birth: __ Month __ Day ____ Year Gender: Male Female Age: ____

Ethnicity (For U.S. Applicants Only! Optional - Used for statistical purposes.)

- African American Caucasian Hispanic-American Other:
 Asian American Multiracial Native American

Email: _____

Mailing Information:

Street: _____

City: _____ State/Province: _____ Zip/Postal Code: _____

Daytime Phone: (____) ____ - _____ Parent's Phone: () ____ - _____

Mobile Phone: () ____ - _____

University/School: _____

Department _____ **Major** _____

Level of Education: (As of September 2009)

Undergraduate: (please circle) Freshman Sophomore Junior Senior

How many years have you complete in Graduate School, Medical School, School of Public Health? _____

Cumulative GPA (4.0 Scale): _____

Major(s) of Study: _____

GENERAL QUESTIONS

Are you currently under academic and/or disciplinary sanctions at your home university/school (please circle)? Yes No If yes, explain below.

How did you first learn about this program? Check all that apply.

- Flyer at your school Study Abroad Office at your school
 Study Abroad Fair at your school Campus Newspaper
 Internet Directory: URL: _____

Have you traveled, lived or studied overseas before? " Yes " No
If yes, please describe and give dates.

Are you in need of scholarship funds to help pay for this program? Yes No

Are you on financial aid at Columbia? Yes No

OFFICIAL TRANSCRIPT

Applicants must send an official transcript from the last attended academic institution. Transcripts can be included with this application in an officially sealed envelope, or sent separately by the academic institution.

" Official transcript is included with this application form

PERSONAL STATEMENT

Please attach a personal statement to this application describing why you want to participate in BIOCEP and what you hope to achieve and contribute. The 2-page personal statement must be typed and double-spaced, with one-inch margins and less than 500 words.

APPLICATION FEE AND MAILING ADDRESS

Applications must be mailed to Dr. John D. Loike, Department of Physiology and Cellular Biophysics, Columbia University, 630 W. 168th Street, BB1111, New York, NY 10032. A check or money order in the amount of \$35 US must be included with this application. The \$35 US application fee is non-refundable. All checks and money orders must be indicated in dollar amounts and made payable to **Columbia University**.

If you are accepted to the program you will be required to deposit \$750 within two weeks after acceptance. This deposit is non-refundable. The remaining \$750 will be required by June 1st 2009. If accepted to the optional clinical internship program then an additional \$500 will be required by June 1st, 2009. All flight arrangements must be made by the applicant. Book your tickets before the end of March where the airfare costs from JFK to Bangkok are about \$1200. After March, airfare will generally exceed 1500.

Tentative Schedule

Date		
Thurs 7/30	Arrive to Bangkok	Check in to Chayapruk International house
Fri 7/31	Depart for weekend at Samet Beach	
Sat 8/1	Beaching and bonding	
Sun 8/2	Return to Mahidol	
Mon 8/3	Introduction to Bangkok and BioCEP	Mr. Brian Phillips and Dr. John Loike
	Introduction to Buddhist bioethics	Mr. Phra Chainarong
	American Bioethical Principles	Dr. John D. Loike
	Afternoon- Touring Bangkok	
Tue 8/4	Morning- Stem Cell Research	Ramathapodi Hospital
	Afternoon- Neuroethics	Mahidol
	Welcoming evening dinner	Mahidol
Wed 8/5	Reproductive Biology	Sirirat hospital
	Tour of IVF Clinic	
Thurs 8/6	Morning – Minister of Health	Ministry of Health
	Afternoon- free	
Friday 8/7	Medical Tourism	Yanhee Hospital
	Leave for Ayutthaya	AIDS Hospice
Sat 8/8	Touring Ayutthaya	
Sun 8/9	Free day	
Mon 8/10	Morning- Neuroethics	Mahidol
	Afternoon- Alternative Medicine	Jubilee Hospital
Tues 8/11	Cancer and ethics	National Cancer Institute
	Free afternoon	
Wed 8/12	Morning- Science and Religion	Mahidol
	Afternoon- Genetic counseling	
	Evening- Dinner Cruise	
Thurs 8/13	Morning- Nutrition and Ethics	Mahidol
	Afternoon- free	
Friday 8/14	Cancer and Ethics	Thailand Institute of Cancer

	Afternoon- prepare paper	
Sat 8/15	Depart for home	
8/17- 8/29	Internship at Yanhee	